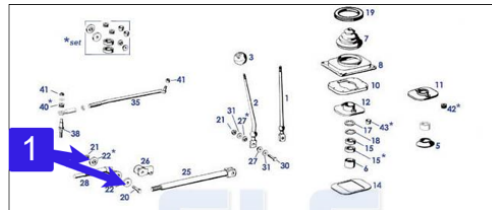


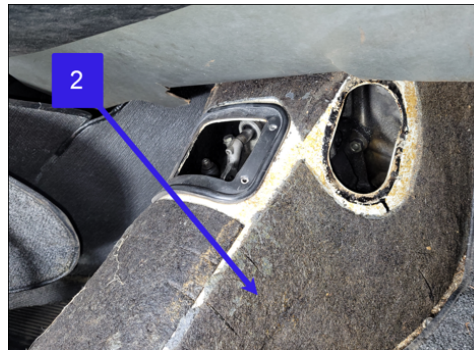
## 250SL Shifter Bushing Replacement

1. This information is regarding the bushings to the shift rod that directly connects to the transmission.

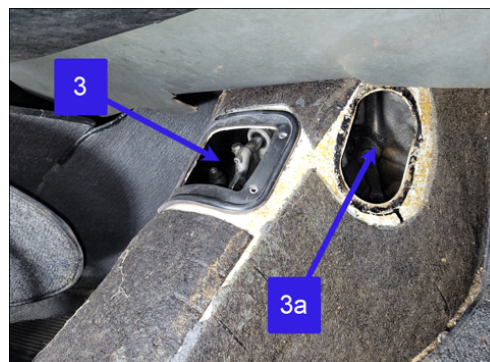
- a. **Note:** These are not the bushings directly below the shifter.
- b. The specific bushings are identified by #22 in the image below.



2. Remove the carpet over the transmission tunnel.
  - a. Carpet covers the area shown below and has already been removed in the image shown.



3. Remove the 4 bolts to the access panel.
  - a. **Note:** Removing the panel shown by 3a is not required. This panel allows access to the back-up light switch.



□

4. This is the linkage connection where the bushings are being replaced. This view is looking down the access panel shown by image 3.
  - a. **Note:** Bushing is not shown in the image below as it is missing.



5. This is what the bushings look like before installation.



6. This shows the Mercedes Benz part number and cost of the bushings from a Mercedes Benz dealership.

Mercedes-Benz of Bellevue  
11850 Bel Red Rd.  
Bellevue, WA 98005  
Phone: (425) 455-8555  
Fax: (425) 637-8803

RETURN/REFUND POLICY: ALL RETURNS MUST BE ACCOMPANIED BY THIS INVOICE AND ARE SUBJECT TO A 20% RESTOCKING CHARGE. RETURNED ITEMS MUST BE IN THE ORIGINAL UNOPENED BOX OR CONTAINER. PLEASE NOTE THAT THE DEALERSHIP WILL NOT ACCEPT RETURNS OR MAKE REFUNDS AFTER 10 DAYS. NO REFUNDS OR RETURNS ON SPECIAL ORDER PARTS OR ELECTRICAL PARTS.

DATE ENTERED 23 JAN 25	YOUR ORDER NO.	DATE SHIPPED 23 JAN 25	INVOICE DATE 23 JAN 25	INVOICE NUMBER 693829	PAGE 1 OF 1
ACCOUNT NO. P103			CASH RETAIL		
113.043					

QTY	PART NO.	DESCRIPTION	UNIT	NET	AMOUNT
2	111-267-00-03	REINFORCING BUSH		19.44	38.88

Thank You For

7. This image shows the new bushings installed.

