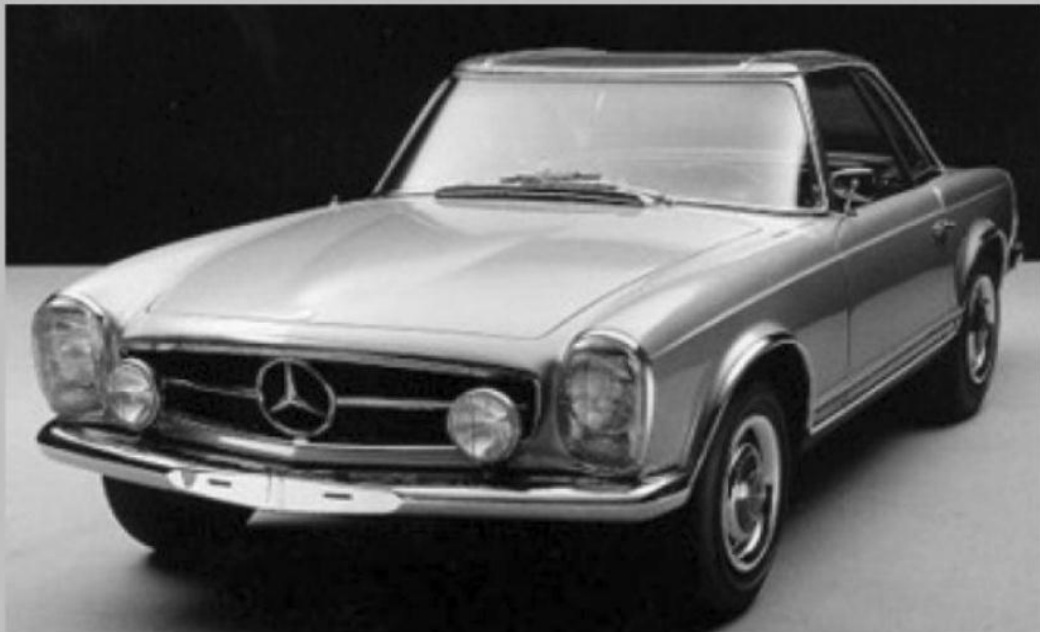


Mercedes-Benz



Sandown Group

Mercedes-Benz of Poole
Holes Bay Road
Poole, Dorset, BH15 3AU
Tel No. 01202 666330
Fax No. 01202 668509



Mercedes-Benz

Classic Car Parts

Mercedes-Benz of Poole has been the Mercedes-Benz approved retailers for East Dorset and West Hampshire since 1994, when they took over the franchise from Majestic Garage. Majestic Garage were retailers for 30 years and started the Classic Parts Department in 1989 at the initiation of Mercedes-Benz who recognised that there was a need within the network for a specialist retailer to look after the requirements of the owners of the older classic Mercedes-Benz cars. When Jacksons were appointed they were happy to continue this aspect of the parts business and took over all of the stock and staff from Majestic Garage.

Shaun Zealey, who is responsible for the department, has well over a quarter of a century of continuous Mercedes-Benz parts experience and promises to give you the expertise and attention that your car deserves. He originally worked under Mervyn Wright (previously responsible for classic parts) at the start of this long career, including periods with him in the classic department but most of this time has been running the successful parts department at Mercedes-Benz of Salisbury.

Using the catalogues

- 190SL, 230SL to 280SL (R113) are the complete set from our original parts catalogues, the others have been scaled down due to a much larger quantity of parts images, keeping the most requested parts in view
- Other than the 190SL, using the table no. to part list will aid you in finding what you need
- The views are mainly looking back from the left side front
- Illustrations are for LHD and may vary for RHD versions
- The catalogues should be used as illustrative guides only as there are too many parts differences to list per model
- We only supply new parts and wherever possible these are OEM from Mercedes-Benz
- Reproduction parts are clearly marked as such
- OEM parts are the latest Mercedes-Benz specification and may vary from the original fitted parts

Ordering

When ordering please quote the chassis and engine numbers for the vehicle and use the table and item numbers to identify parts.

All orders must be pre-paid; we accept all major credit and debit cards. Items specially ordered are not cancellable and if correctly supplied are non—returnable. Items correctly supplied from stock will be accepted for return up to 7 days after receipt, and will be subject to a handling charge. All returns must be authorised and shipped pre-paid quoting the supply invoice number. These conditions do not affect your statutory rights.

Shipping

Goods in the UK will normally be despatched by either Letter post or Overnight carrier. Unless specific instructions are received, we will use our own judgement in line with the value and weight and use the most appropriate option. Overseas parcels will normally be sent airmail or international parcel service.

Please advise if you have any special despatch requirements.

Tel. Shaun Zealey on (++44) (0) 1202 666330 Fax. (++44) (0) 1202 668509

e-mail: shaun.zealey@mercedes.co.uk

Image table index

24 - Engine & gearbox mounts	63 - Side panel
26 - Manual transmission	64 - Rear panel
27 - Auto transmission	65 - Roof (fixed)
29 - Pedal assembly	67 - Windows (not door)
30 - Throttle control	68 - Covering
32 - Springs & suspension	69 - Covering & lining
33 - Front axle	72 - Front doors
35 - Rear axle	73 - Rear doors
40 - Wheels	75 - Bootlid
41 - Propshaft	77 - Folding top
42 - Brakes	78 - Sunroof
46 - Steering	79 - Hardtop
47 - Fuel system	80 - Vacuum system
49 - Exhaust	82 - Electrical system
50 - Radiator	(see also 54)
54 - Electrical system, main	83 - Heating & ventilation
(see also 82)	86 - Windshield washer
58 - Tools	88 - Front & rear end sheet
61 - Frame, floor	metal
62 - Front panel	91 - Seats

TABLE 24 ENGINE MOUNTINGS

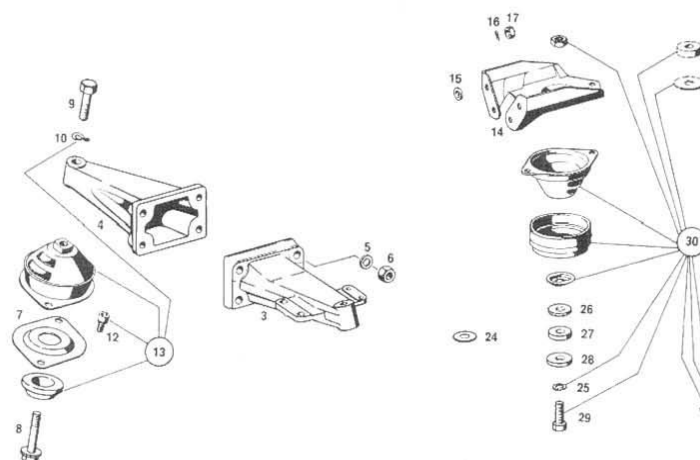


TABLE 25 CLUTCH

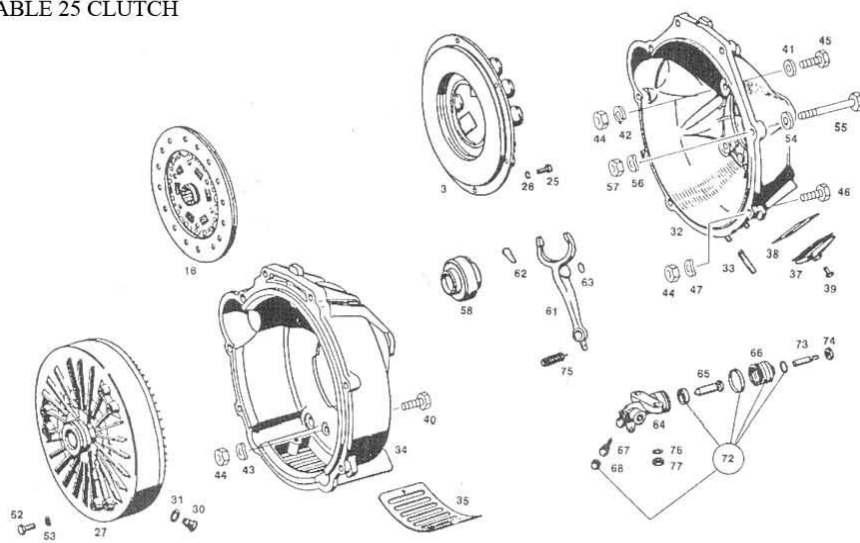


TABLE 26/1 MANUAL GEARBOX

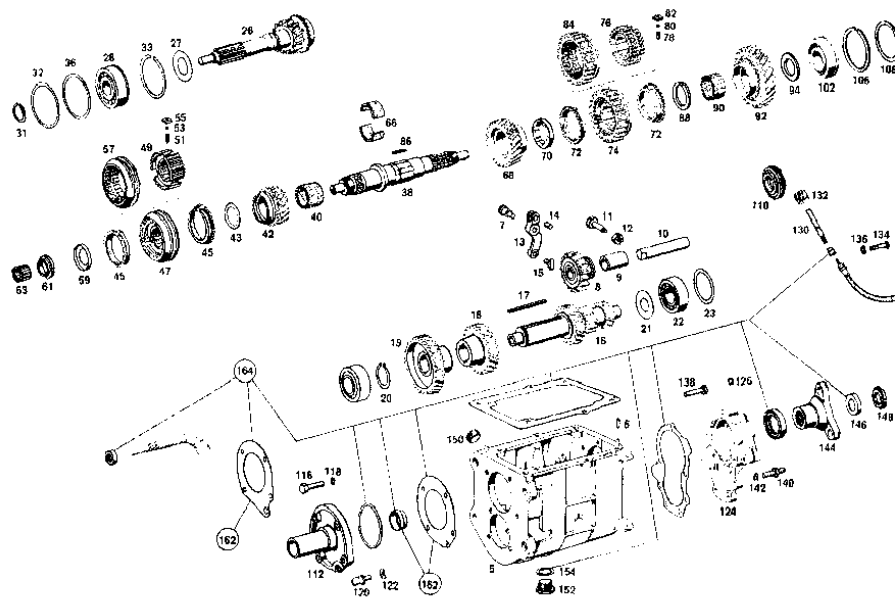


TABLE 26/2 GEARCHANGE LINKAGE

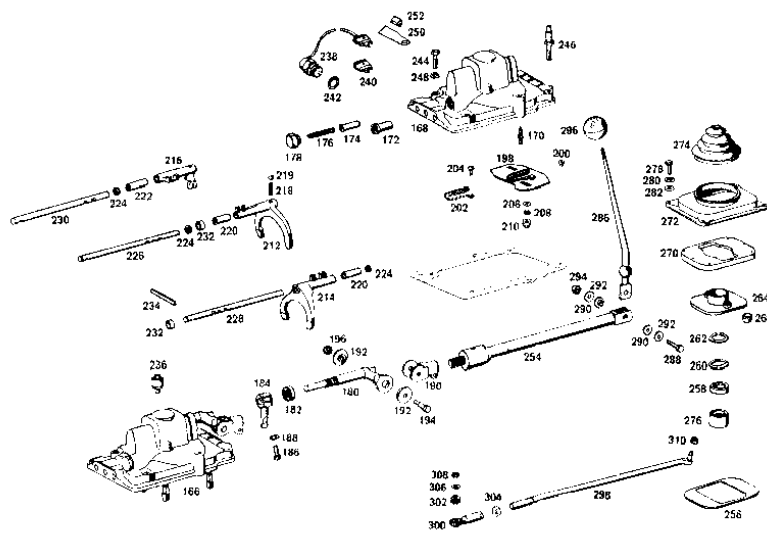


TABLE 27/1 AUTOMATIC TRANSMISSION

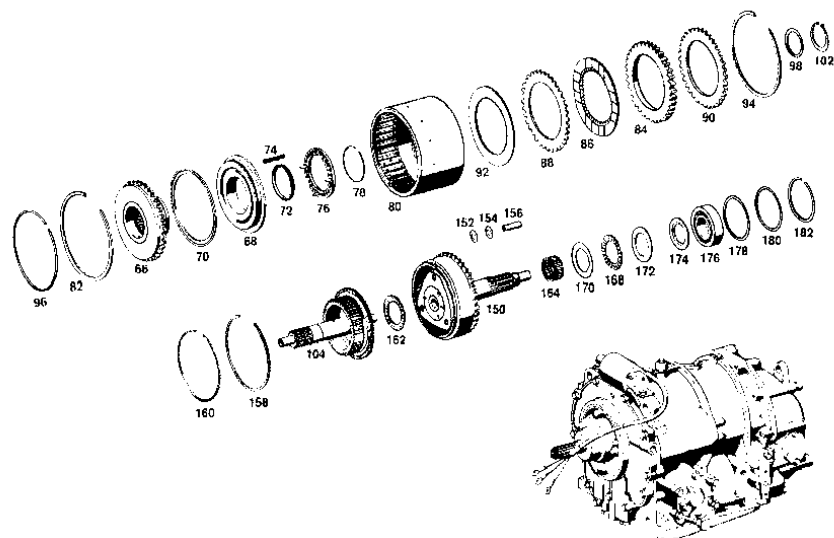


TABLE 27/2 AUTOMATIC TRANSMISSION

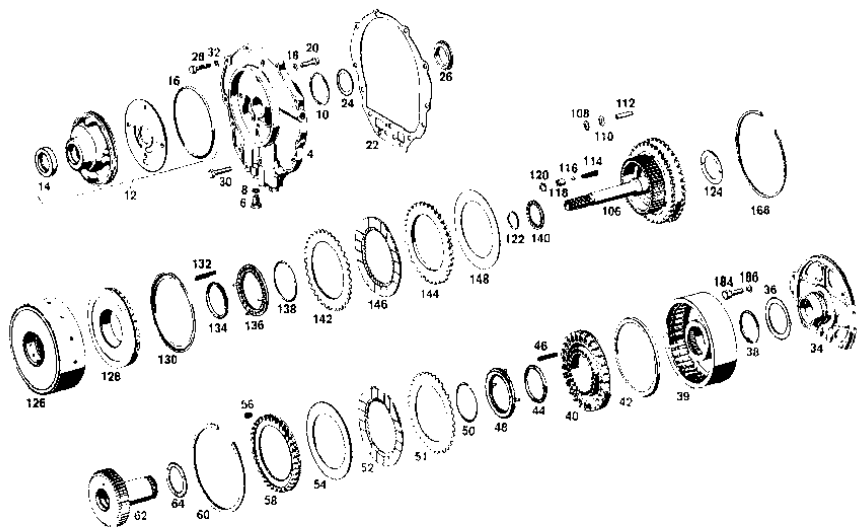


TABLE 27/3 AUTOMATIC TRANSMISSION

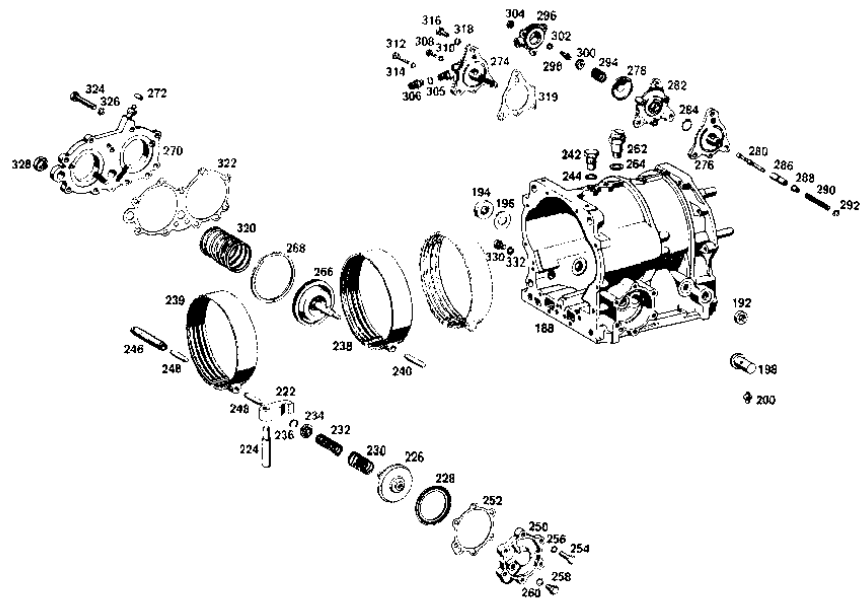


TABLE 27/4 AUTOMATIC TRANSMISSION

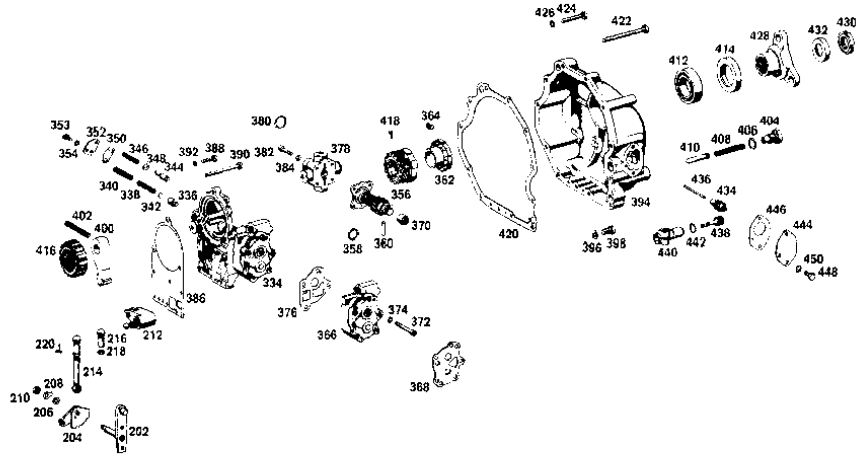


TABLE 26/5 AUTOMATIC TRANSMISSION

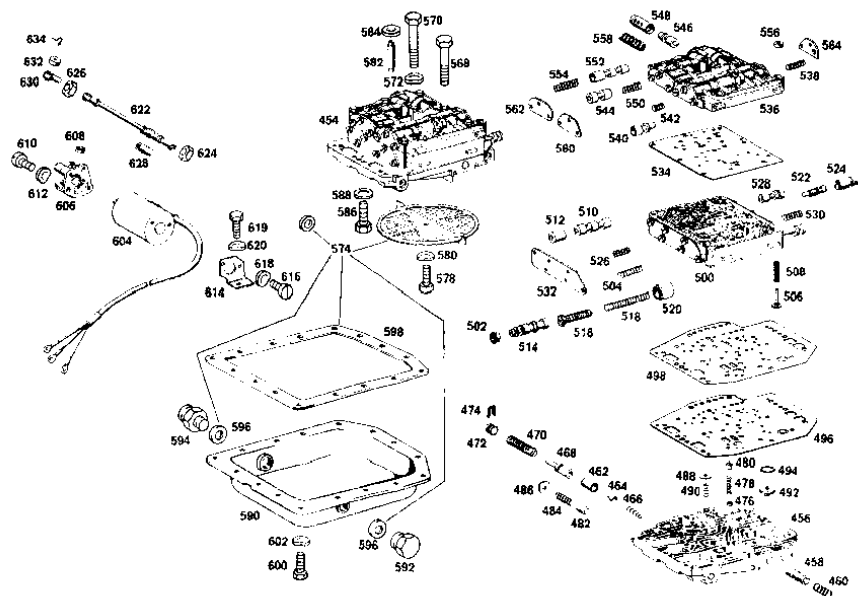


TABLE 26/6 AUTOMATIC TRANSMISSION

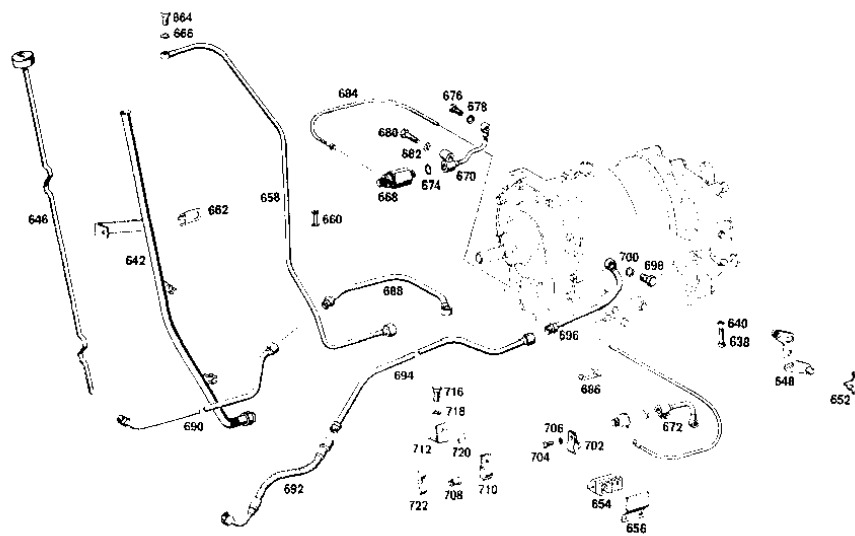


TABLE 27/7 AUTOMATIC TRANSMISSION

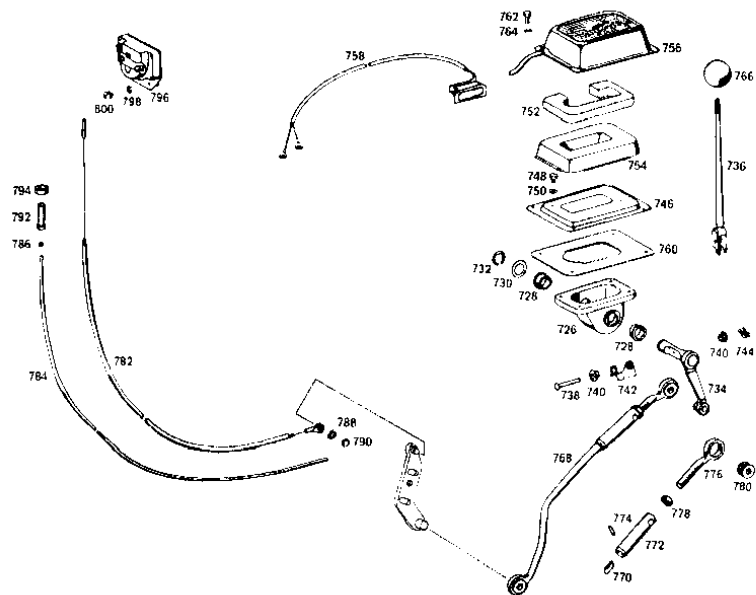


TABLE 29 BRAKE & CLUTCH PEDALS

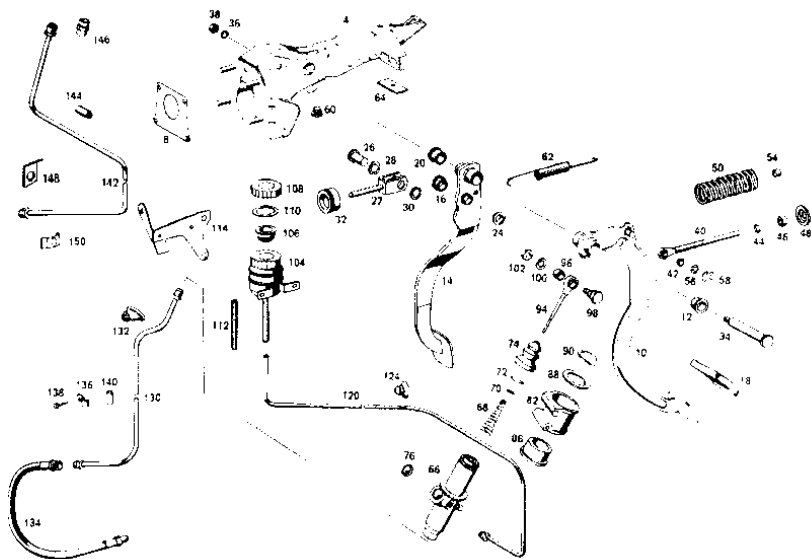


TABLE 30 ACCELERATOR LINKAGE

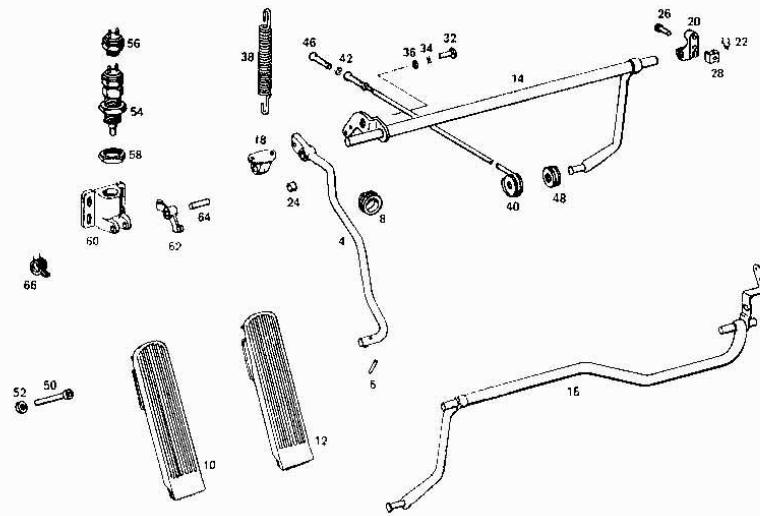


TABLE 32 SUSPENSION

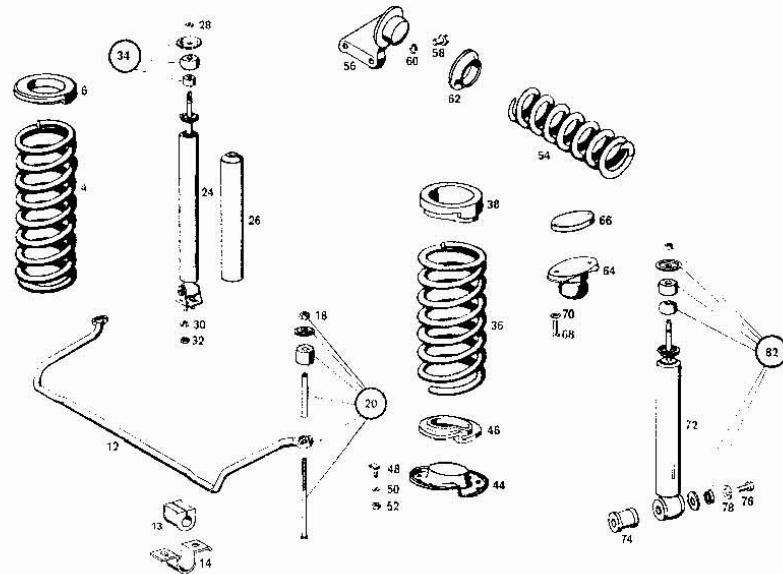


TABLE 33/1 FRONT AXLE

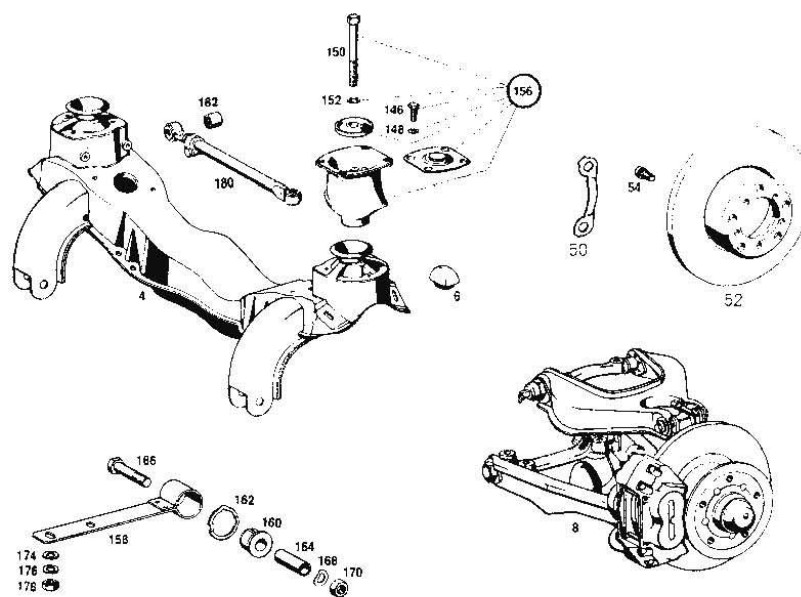


TABLE 33/2 FRONT AXLE

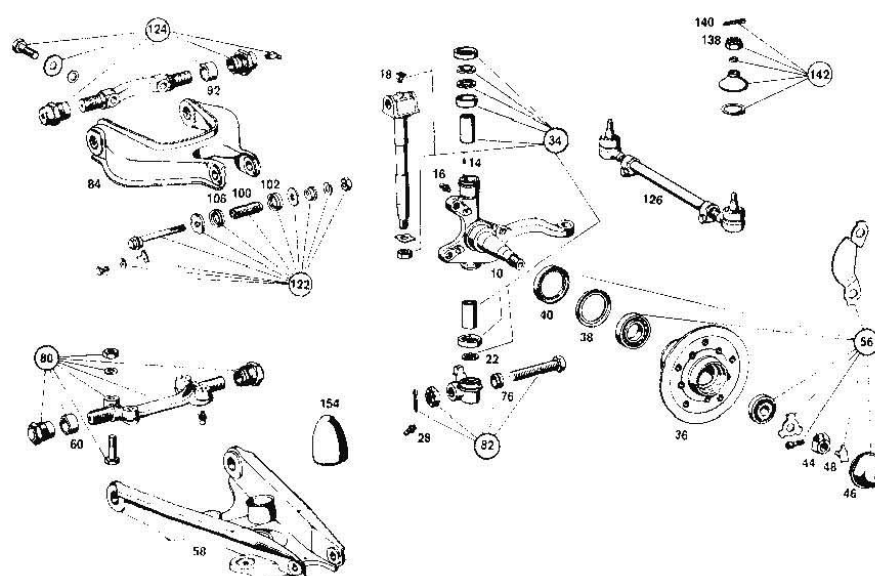


TABLE 35/1 REAR AXLE

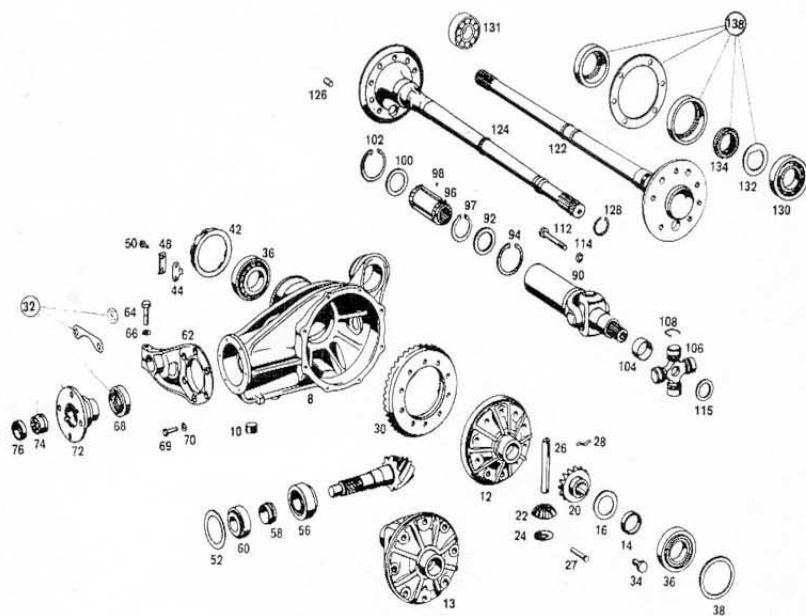


TABLE 35/2 REAR AXLE

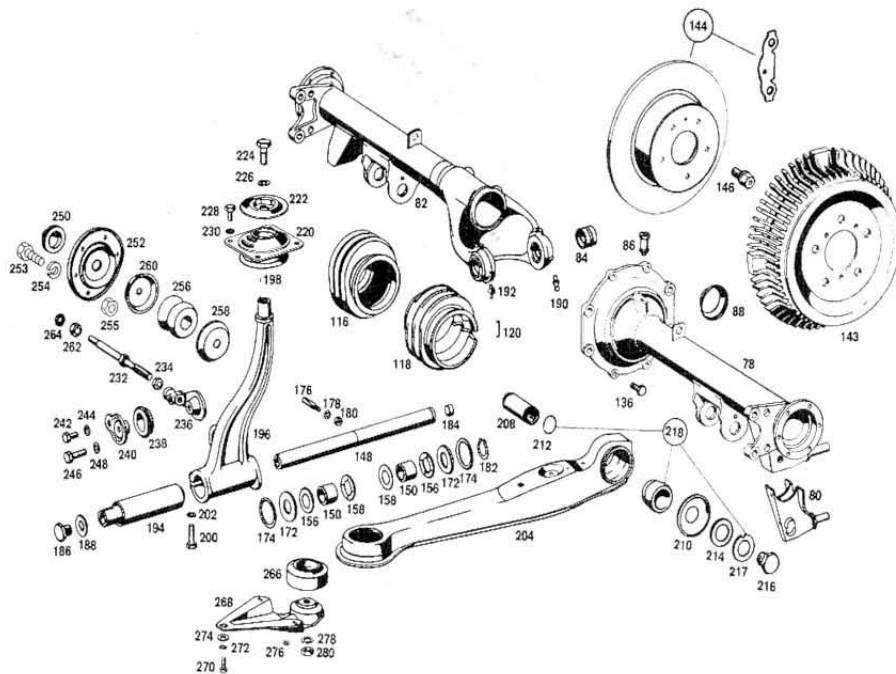


TABLE 40 WHEELS

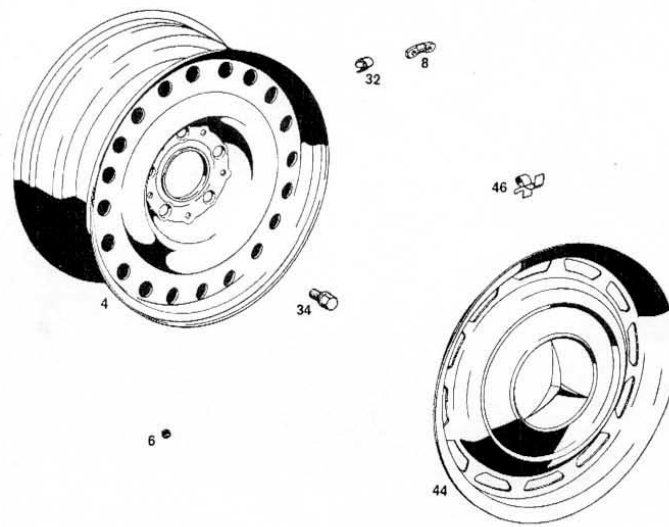


TABLE 41 PROPSHAFT

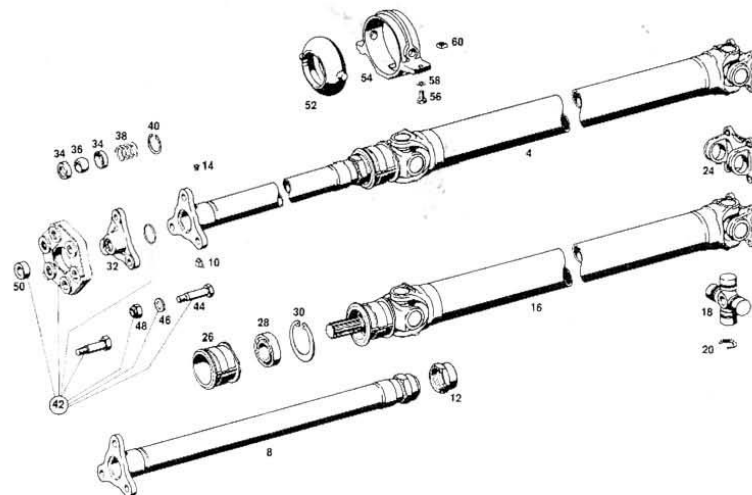


TABLE 42/1 FRONT WHEEL BRAKES

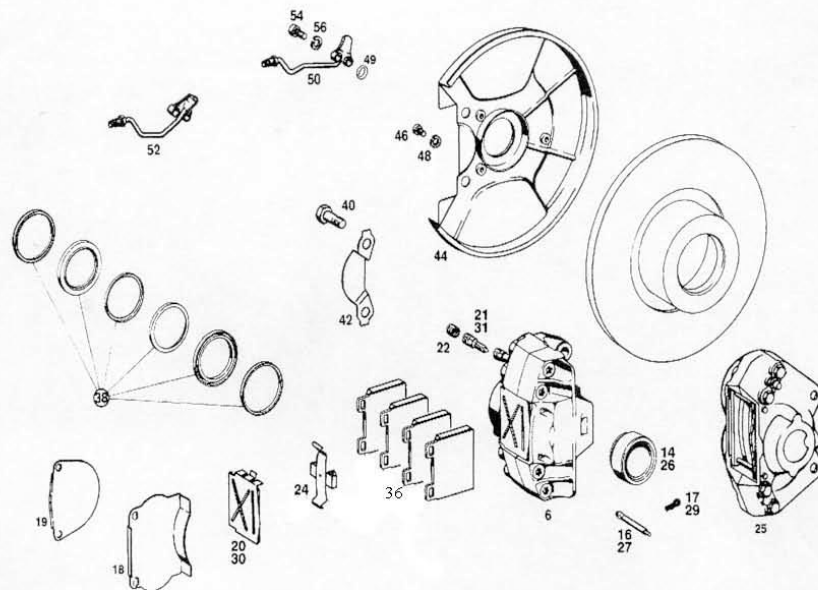


TABLE 42/2A REAR WHEEL BRAKES 230SL

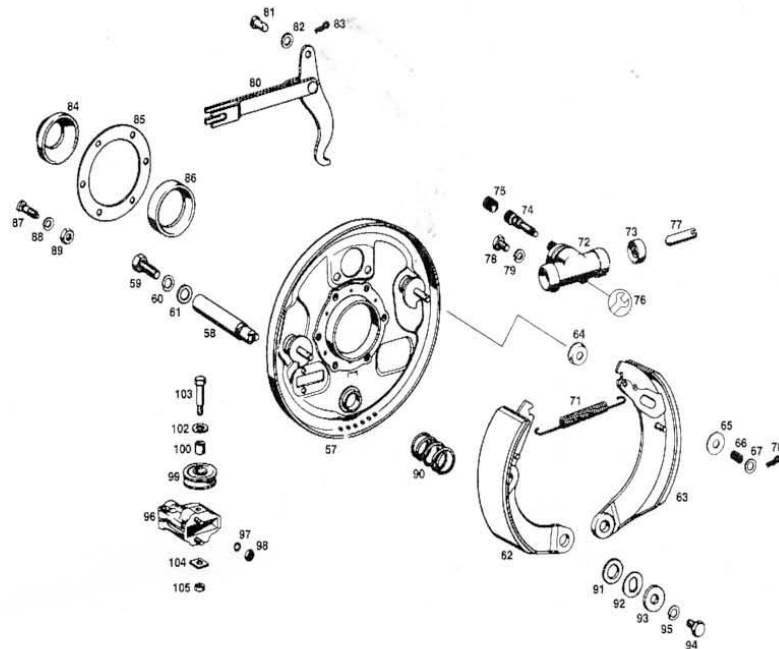


TABLE 42/2B REAR WHEEL BRAKES 250-280SL

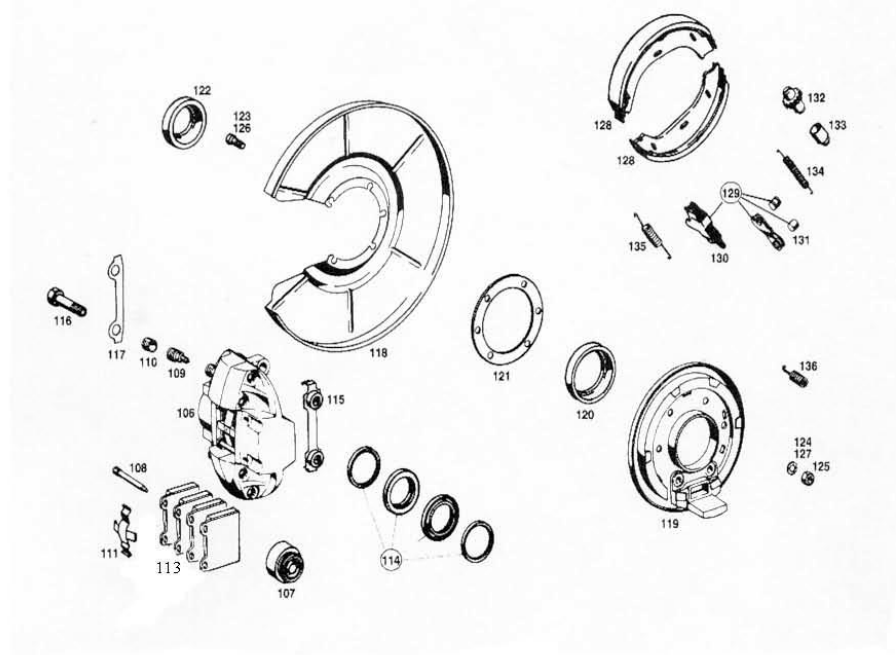


TABLE 42/3 BRAKE SERVO, MASTER CYLINDER AND LINES

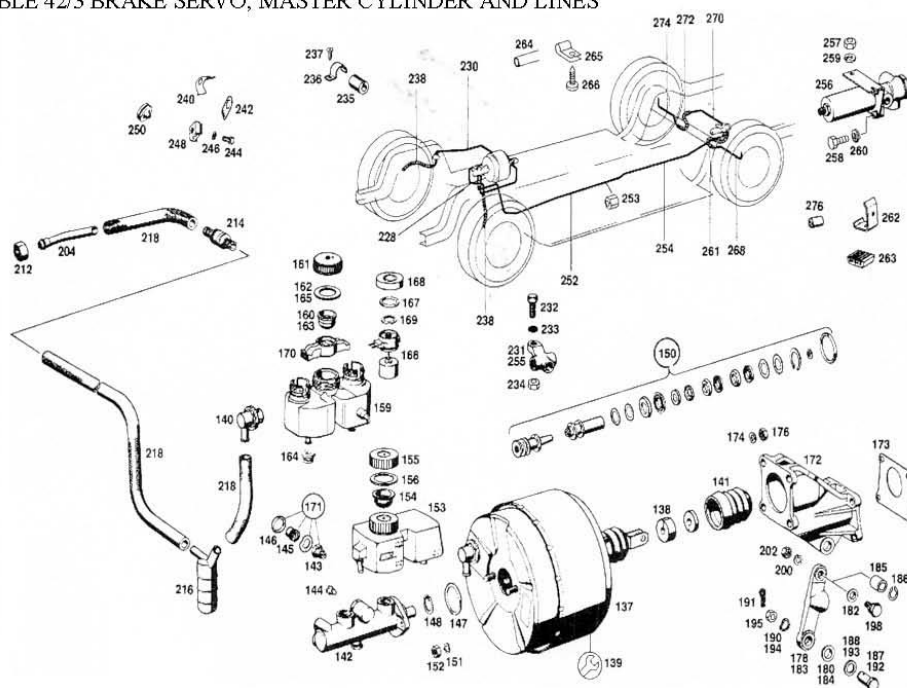


TABLE 42/4 HANDBRAKE

This technical diagram illustrates the exploded view of a handbrake assembly. The components are numbered as follows:

- 284**: Two small cylindrical pins or spacers.
- 294**: A threaded rod or pin.
- 292**: A small circular washer or spacer.
- 280**: The main handbrake lever arm.
- 288**: A small pin or bolt.
- 289**: A small pin or bolt.
- 286**: A small pin or bolt.
- 290**: A small pin or bolt.
- 298**: A small bracket or plate.
- 302**: A small pin or bolt.
- 300**: A small pin or bolt.
- 314**: A small pin or bolt.
- 308**: A small pin or bolt.
- 306**: A small pin or bolt.
- 304**: A small pin or bolt.
- 310**: A long cable or rod.
- 312**: A small pin or bolt.
- 318**: A small pin or bolt.
- 316**: A small pin or bolt.
- 320**: A small pin or bolt.
- 322**: A small pin or bolt.
- 324**: A long cable or rod.
- 330**: A small pin or bolt.
- 325**: A small pin or bolt.
- 326**: A small pin or bolt.
- 327**: A small pin or bolt.
- 334**: A small pin or bolt.
- 328**: A small pin or bolt.

TABLE 46/1 STEERING LINKAGE AND MANUAL STEERING BOX

Exploded view diagram of a steering linkage and manual steering box assembly. The diagram shows various components including the steering box, tie rods, tie rod ends, and steering knuckles, all labeled with part numbers. A central column of parts is numbered 16 through 56. Other parts are numbered 270 through 310. A group of parts on the right is numbered 58 through 82. A group of parts on the left is numbered 276 through 306. A group of parts at the top left is numbered 286 through 300. A group of parts at the bottom left is numbered 274 through 282. A group of parts at the top right is numbered 46 through 52. A group of parts at the bottom right is numbered 76 through 82.

[illegible]

TABLE 46/4 POWER STEERING BOX

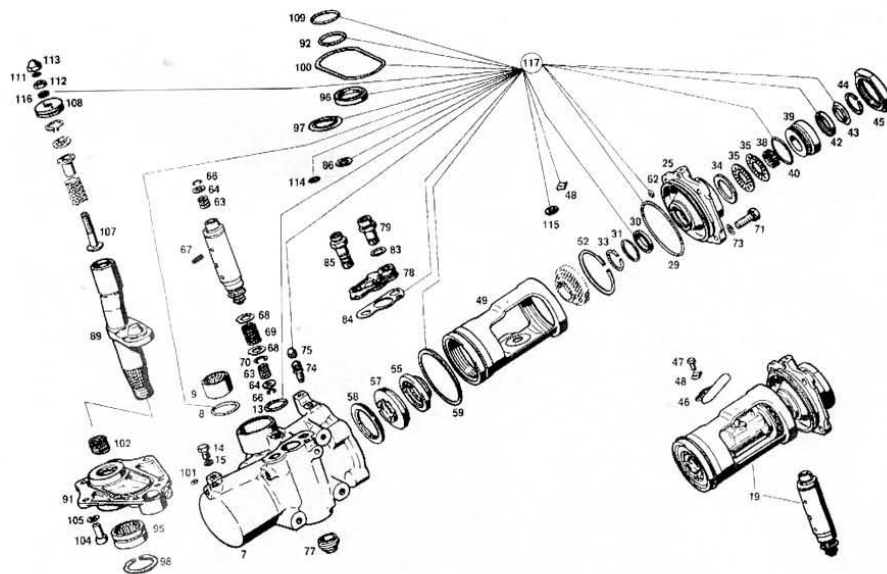


TABLE 46/5 POWER STEERING PUMP

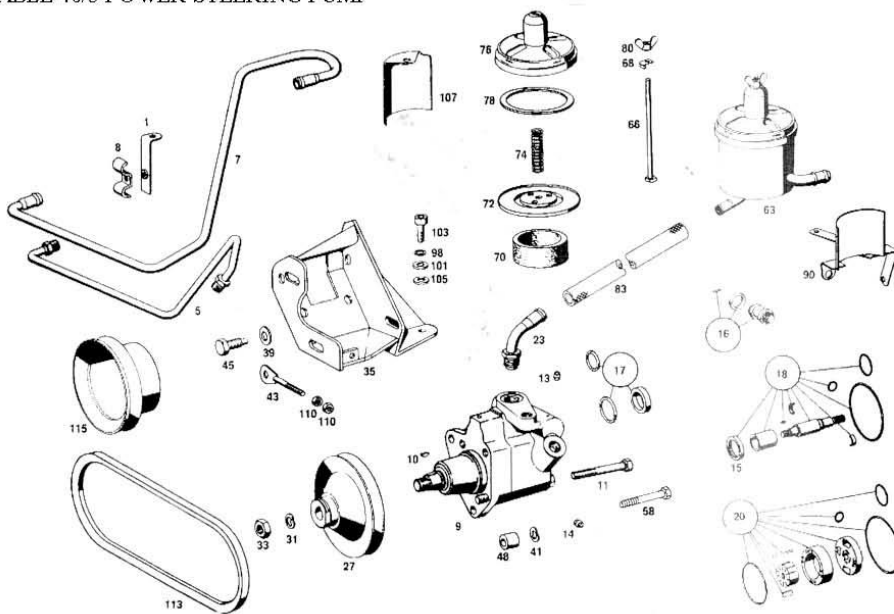


TABLE 47/2 FUEL PUMP

ORIGINAL STYLE PUMP
& MOUNTINGS

CURRENT PUMP

CURRENT STYLE
PUMP MOUNTING

This technical diagram illustrates the components of a fuel pump assembly, distinguishing between 'ORIGINAL STYLE' and 'CURRENT' versions. The 'ORIGINAL STYLE PUMP & MOUNTINGS' section at the top right shows various mounting brackets (108, 90, 104, 102, 86) and a pump housing (88) with associated fasteners (120, 118, 110, 106, 114, 116, 66, 68, 74, 76, 78, 72). The 'CURRENT STYLE PUMP MOUNTING' section shows a different mounting bracket (92) and fasteners (112, 94, 95, 84, 100, 82). The 'CURRENT PUMP' section shows a cylindrical pump unit (126, 124) and a fuel line assembly (138, 136, 134) with various fittings (146, 144, 132, 130, 122, 64, 150, 148, 162, 166, 168, 154, 152, 170). The diagram uses dashed lines to show the assembly sequence and alignment of the components.

TABLE 49/1 EXHAUST FRONT PIPES

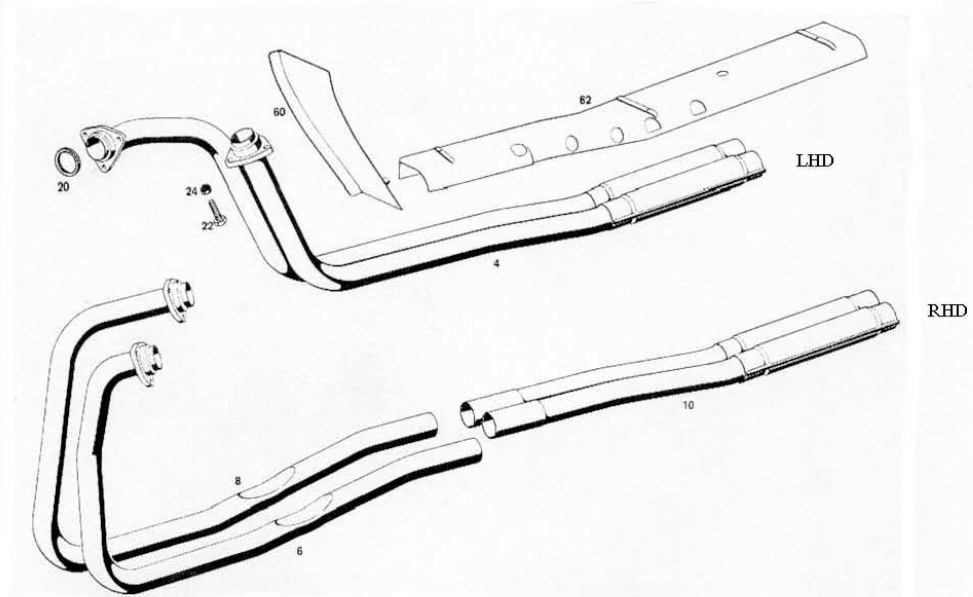


TABLE 49/2 EXHAUST REAR PIPES

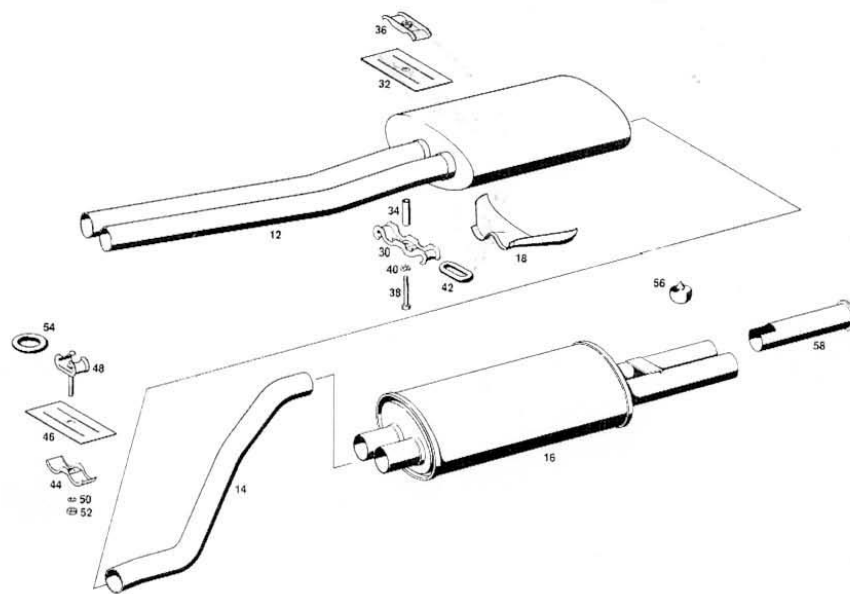


TABLE 50 RADIATOR & HOSES

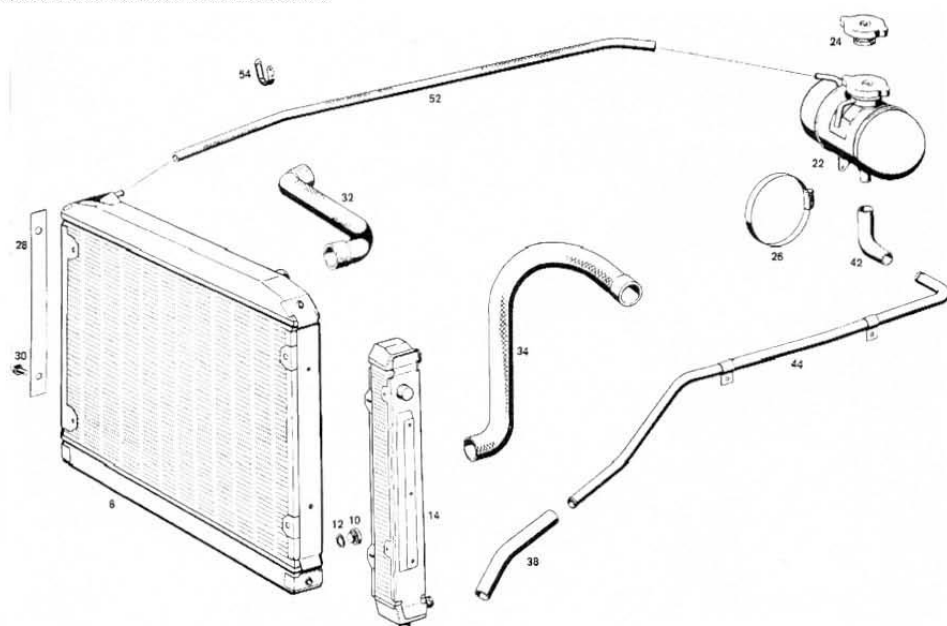


TABLE 54/1 ELECTRICS

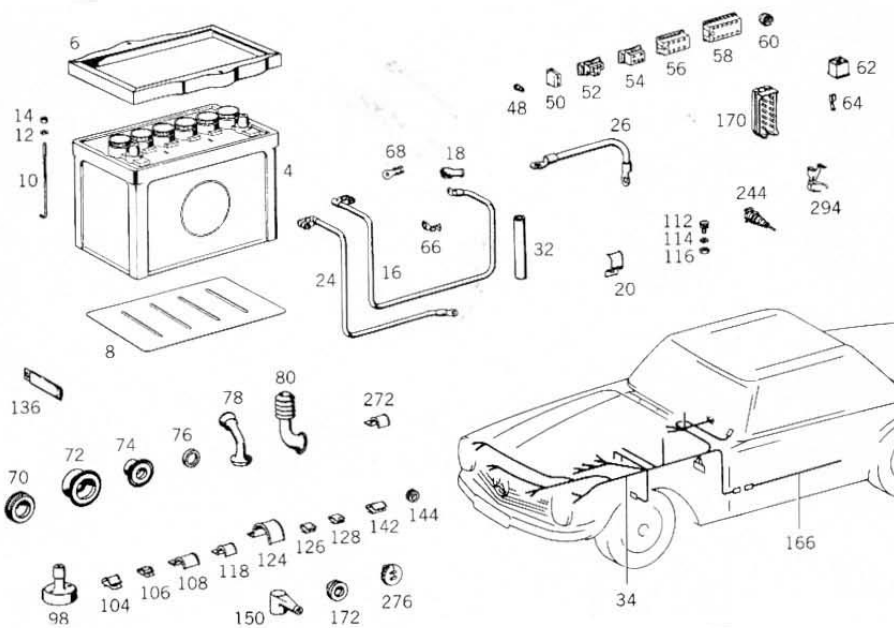


TABLE 54/2 ELECTRICS

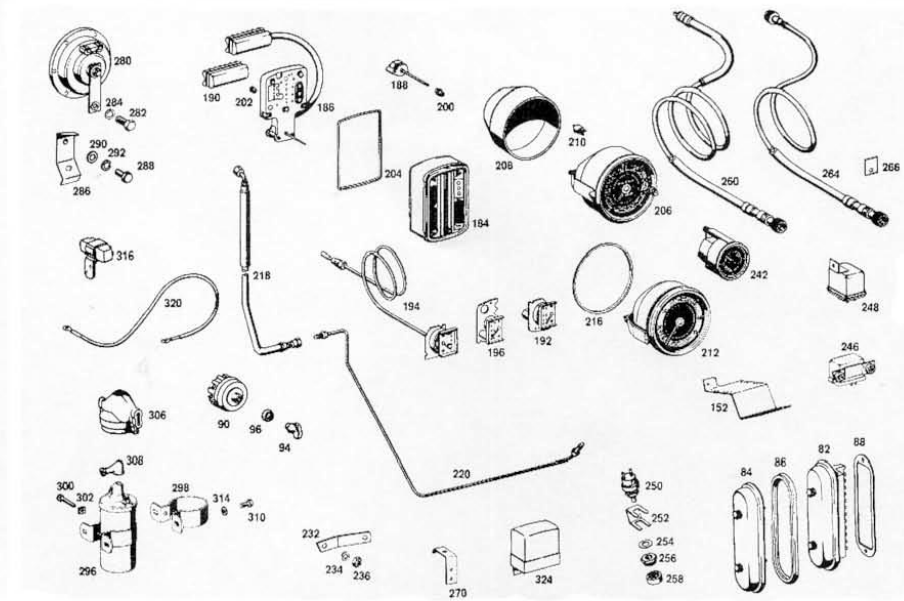


TABLE 58 TOOLS

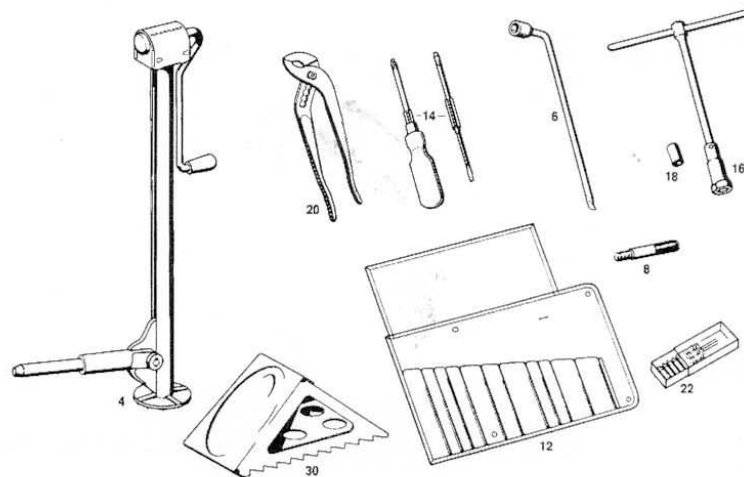


TABLE 61/1 CHASSIS & BOOT FLOOR

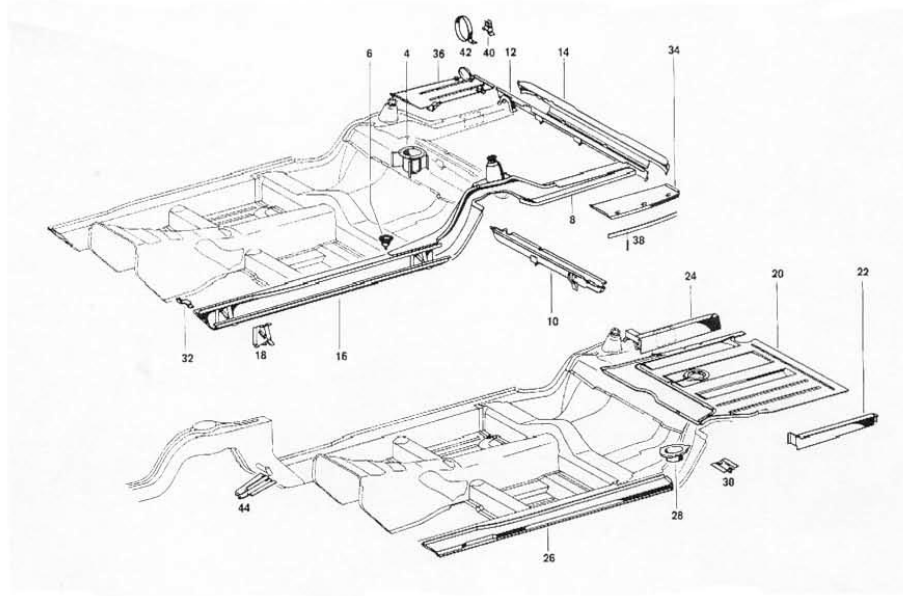


TABLE 61/2 FLOOR PANELS

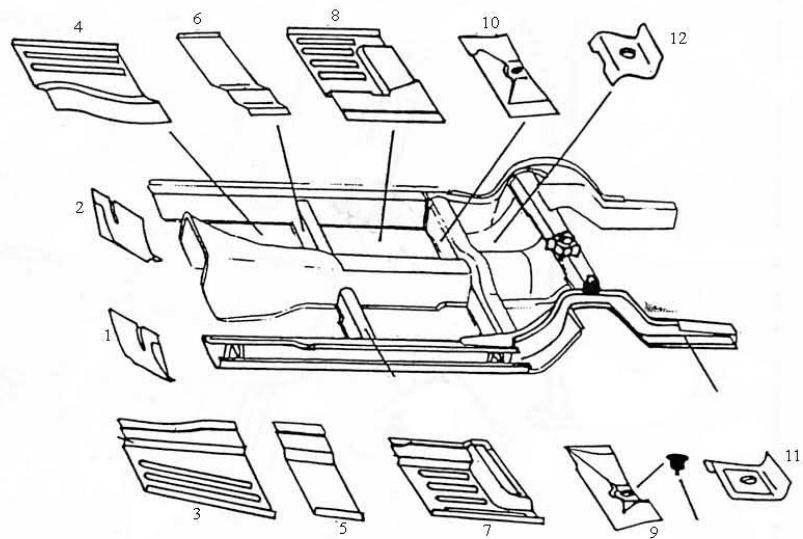


TABLE 62/1 FRONT PANELS

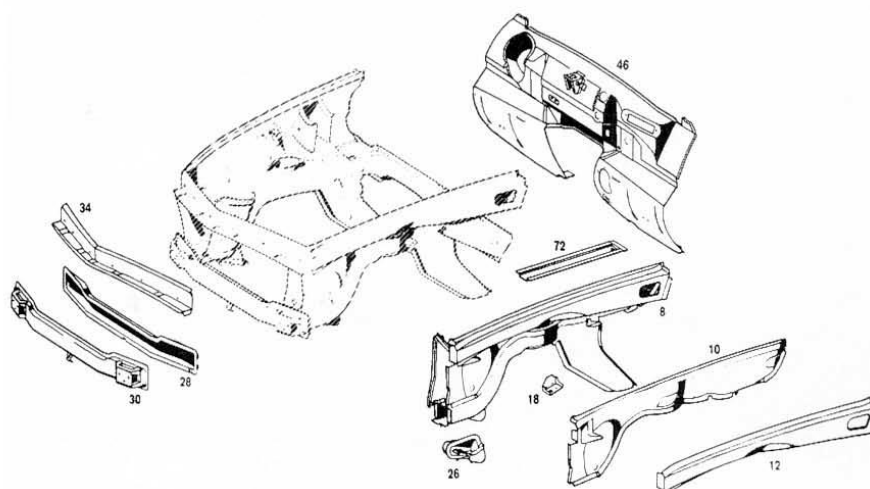


TABLE 62/2 FRONT PANELS

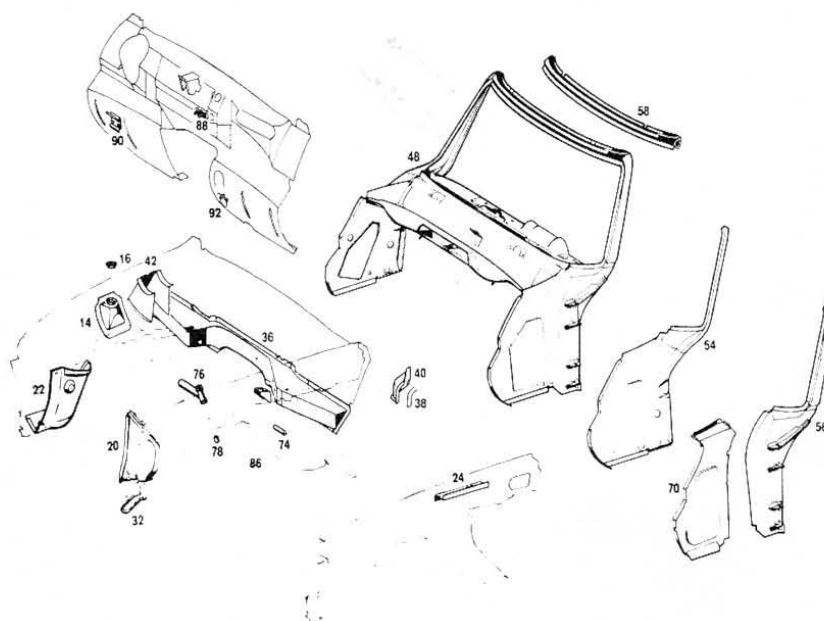


TABLE 62/3 FRONT PANELS

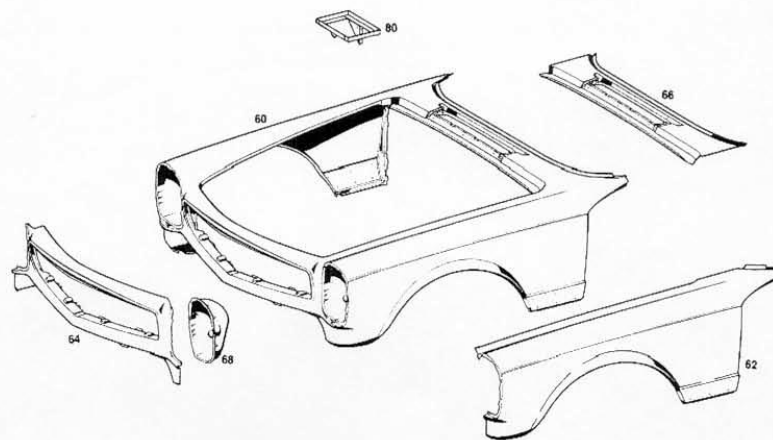


TABLE 64 REAR PANELS

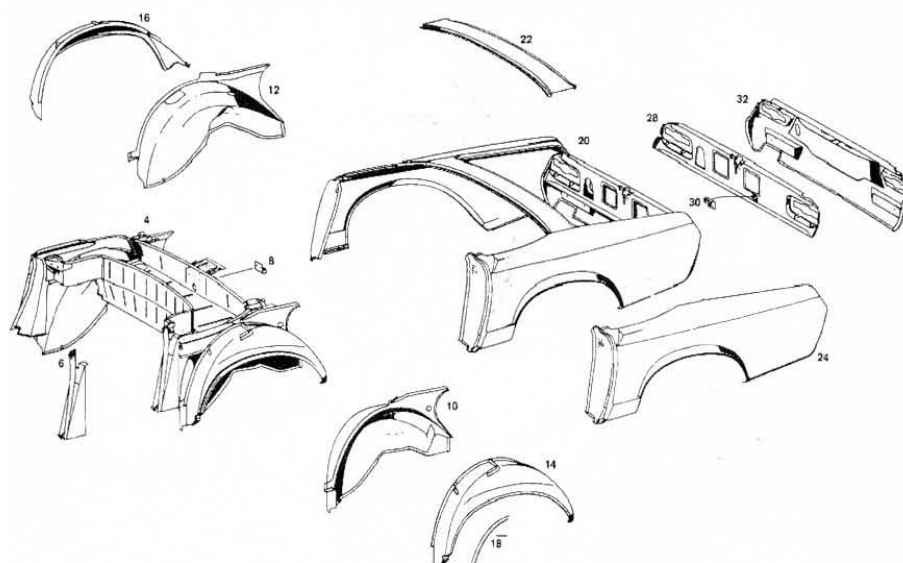


TABLE 67 WINDSCREEN

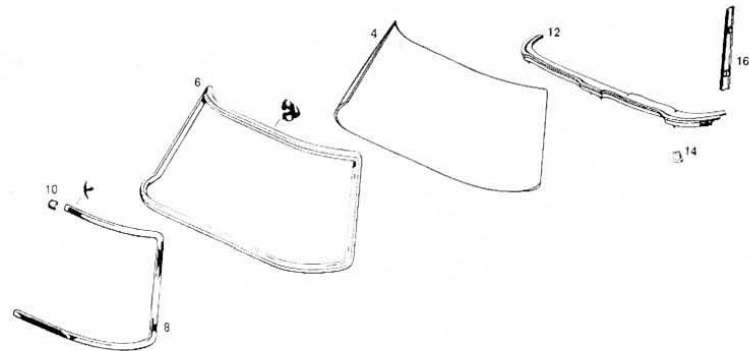


TABLE 68/1 COVERING & LININGS

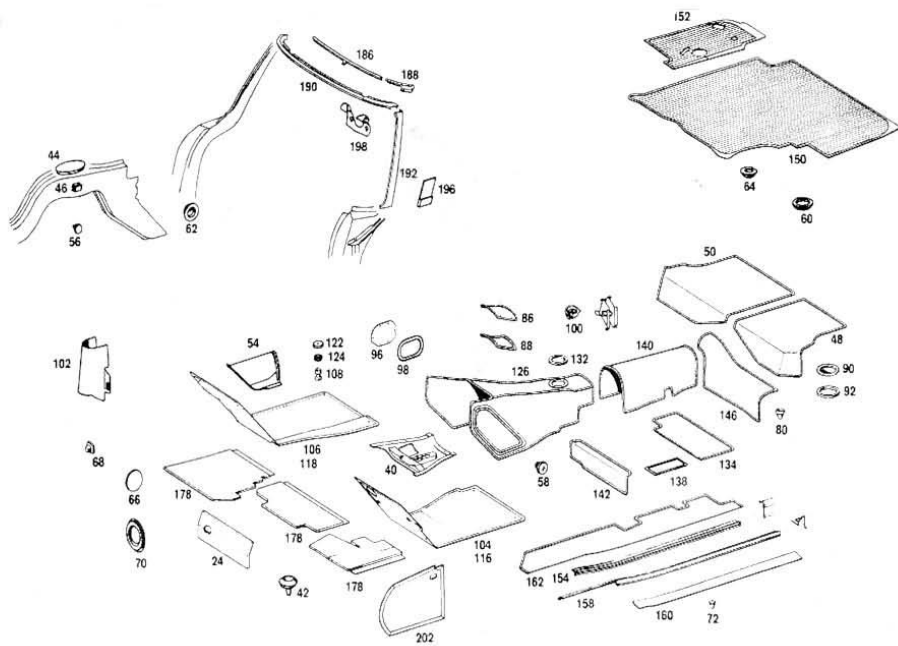


TABLE 68/2 DASHBOARD FITTINGS

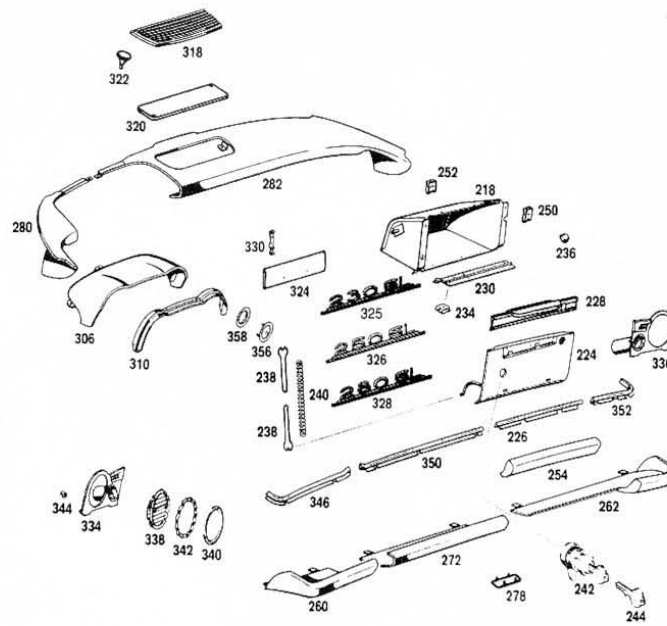


TABLE 69 EXTERIOR TRIM & BOOT LININGS

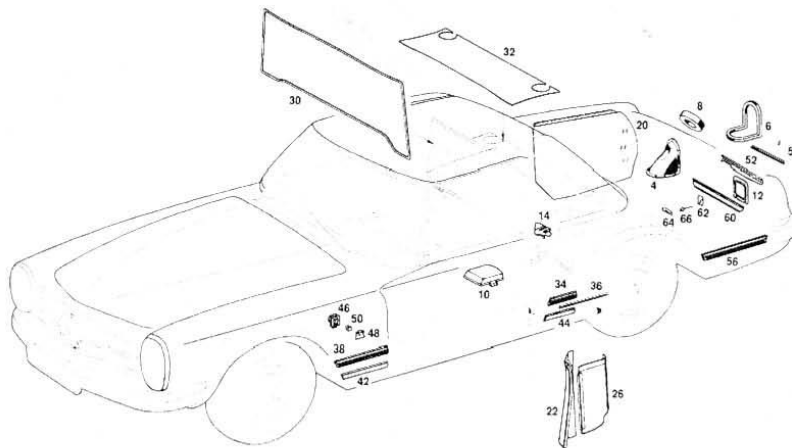


TABLE 72/1 DOORS

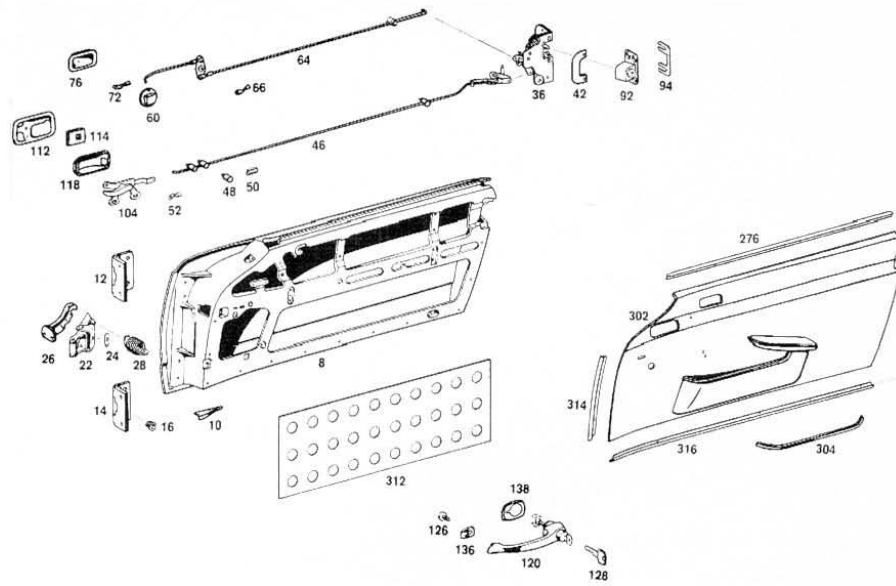


TABLE 72/2 DOORS

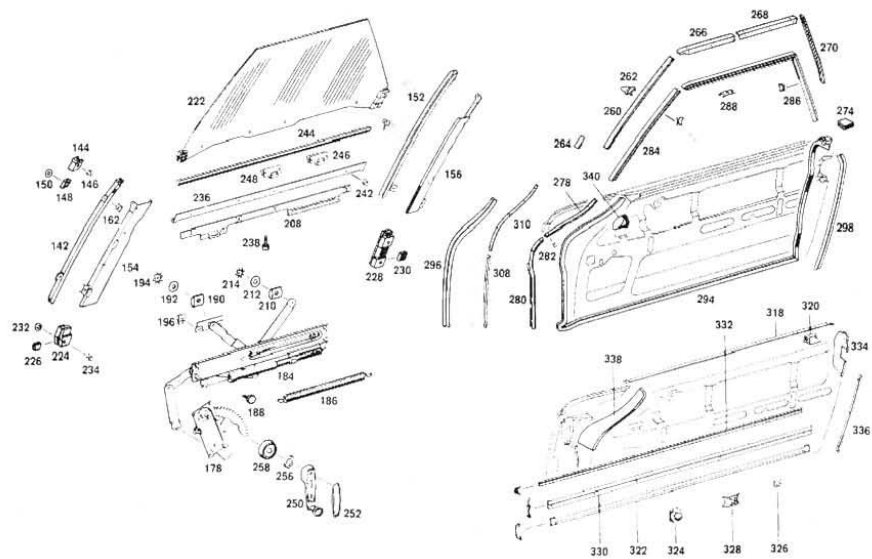


TABLE 75 BOOT LID & REAR FLAP

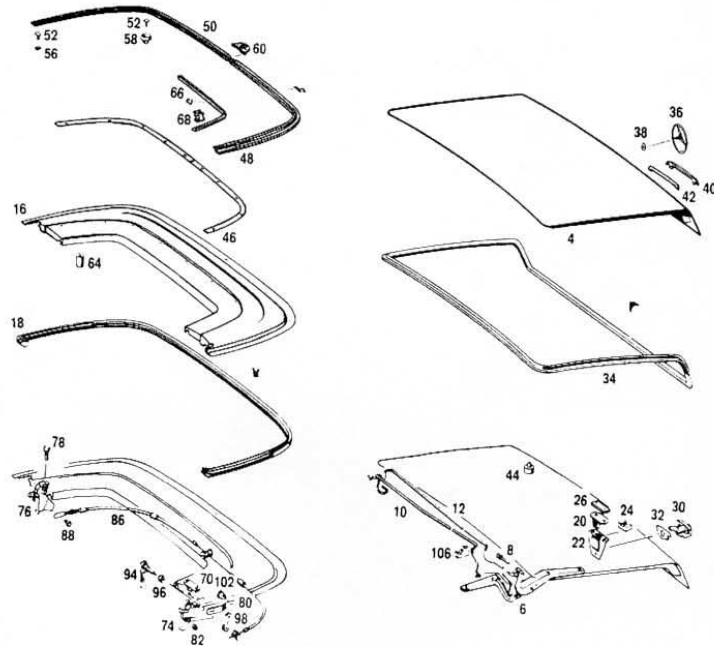


TABLE 77 SOFT TOP

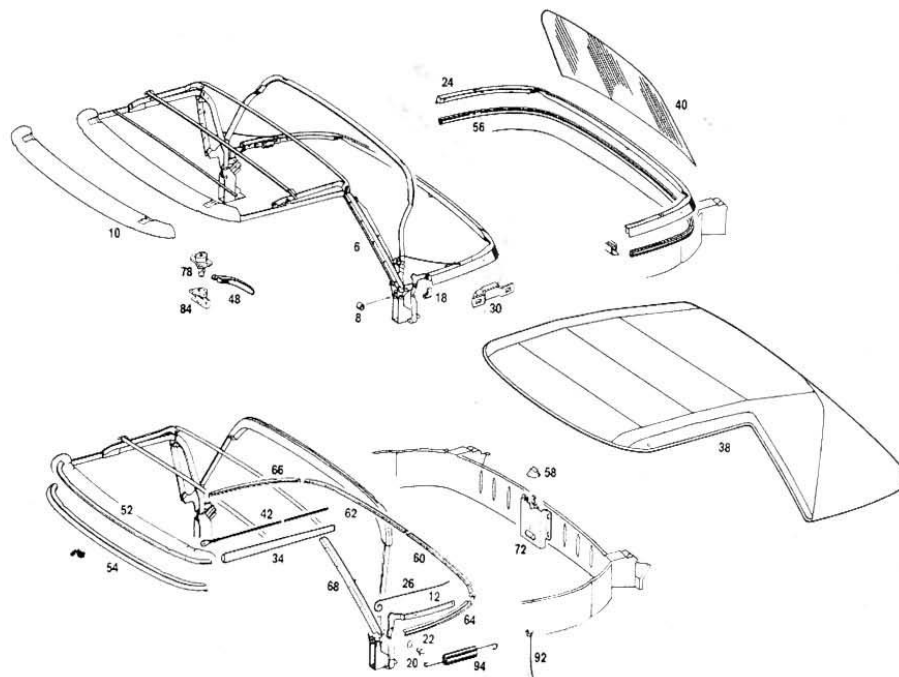


TABLE 79/1 HARDTOP

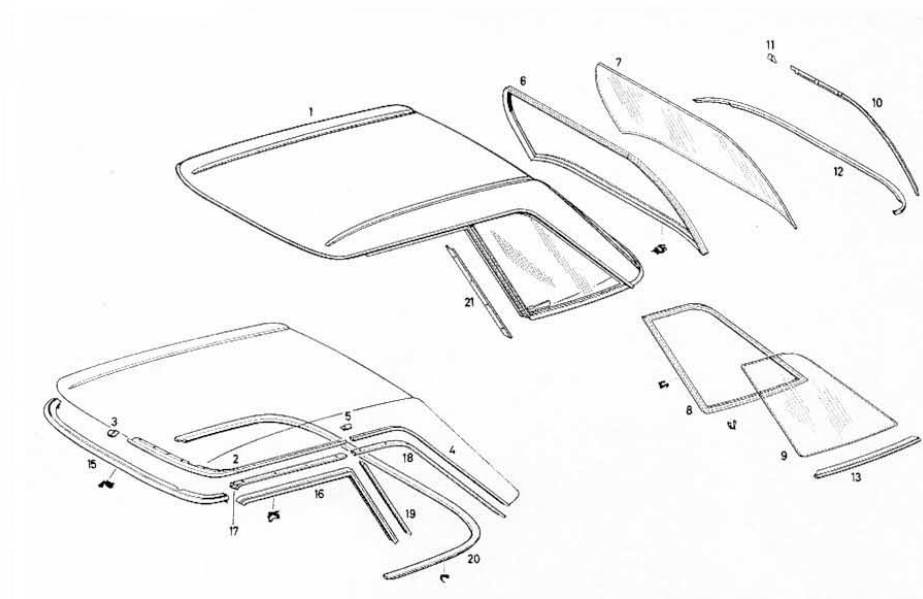


TABLE 79/2 HARDTOP

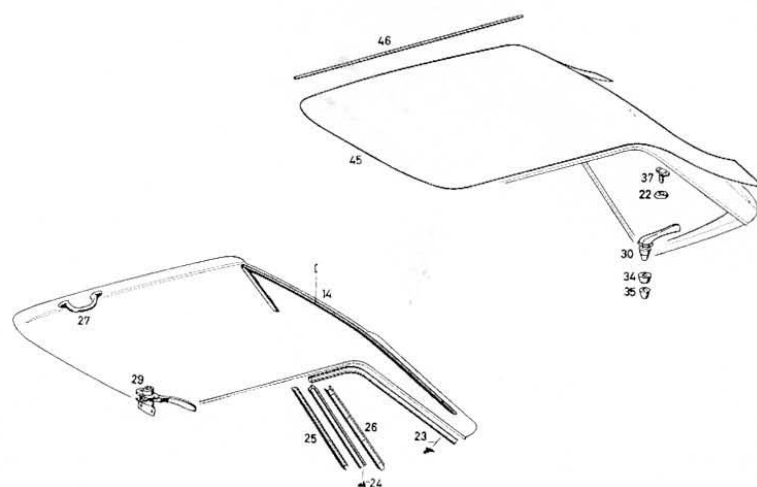


TABLE 81 APPOINTMENTS

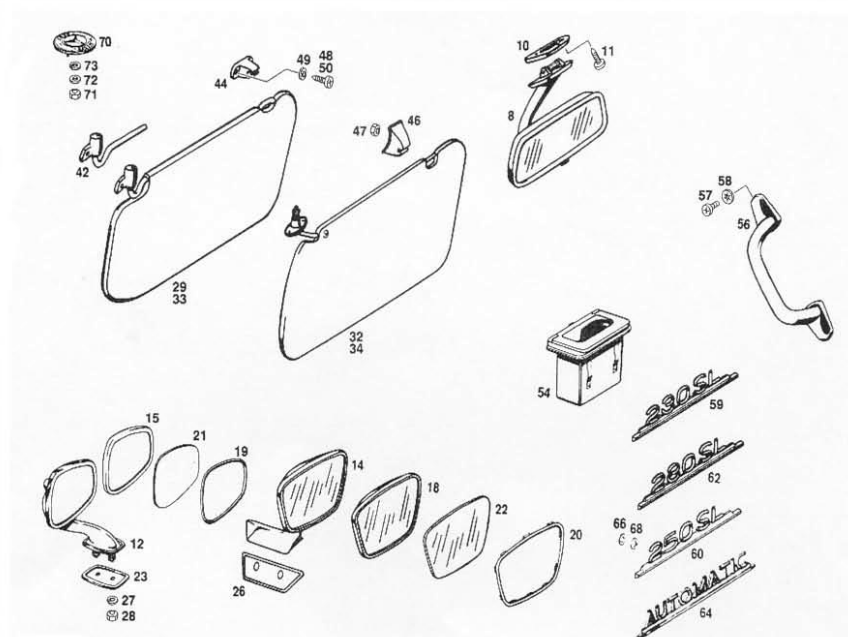


TABLE 82/1 ELECTRICS

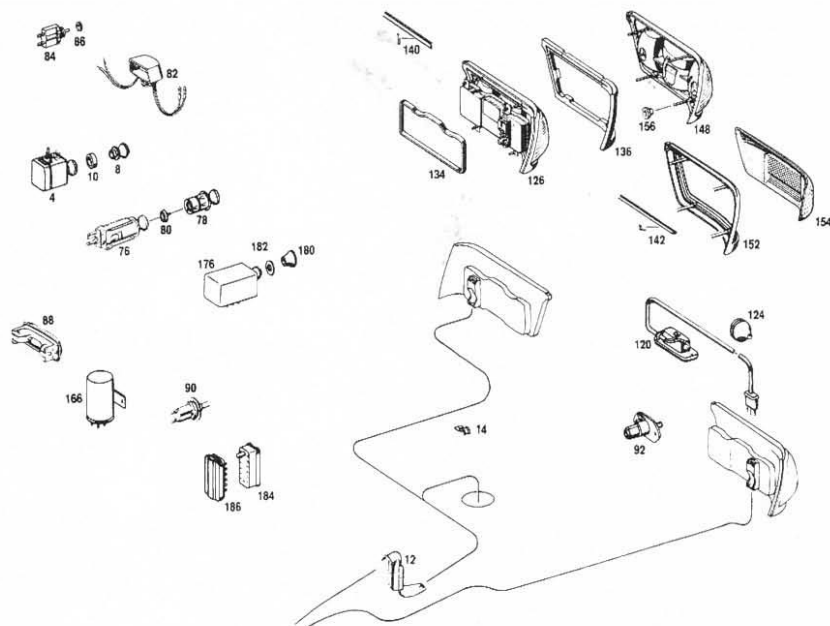


TABLE 82/2 ELECTRICS

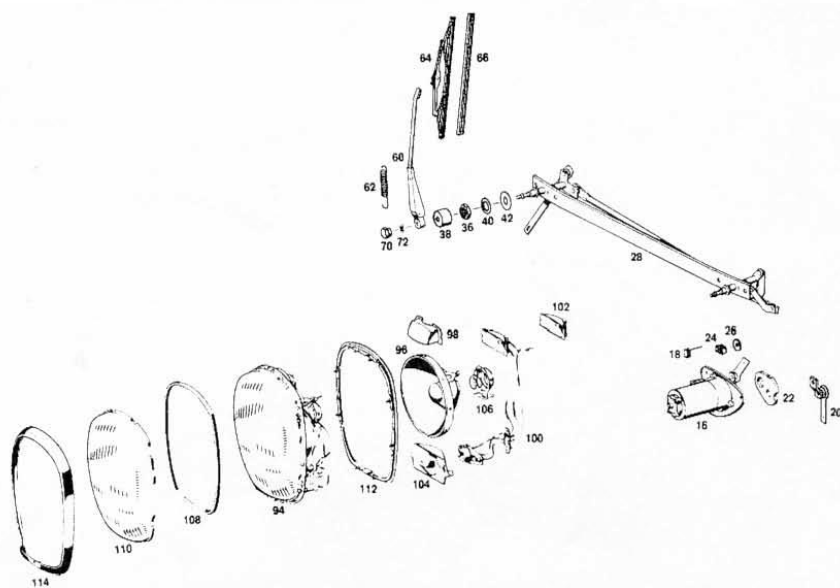


TABLE 83 HEATER

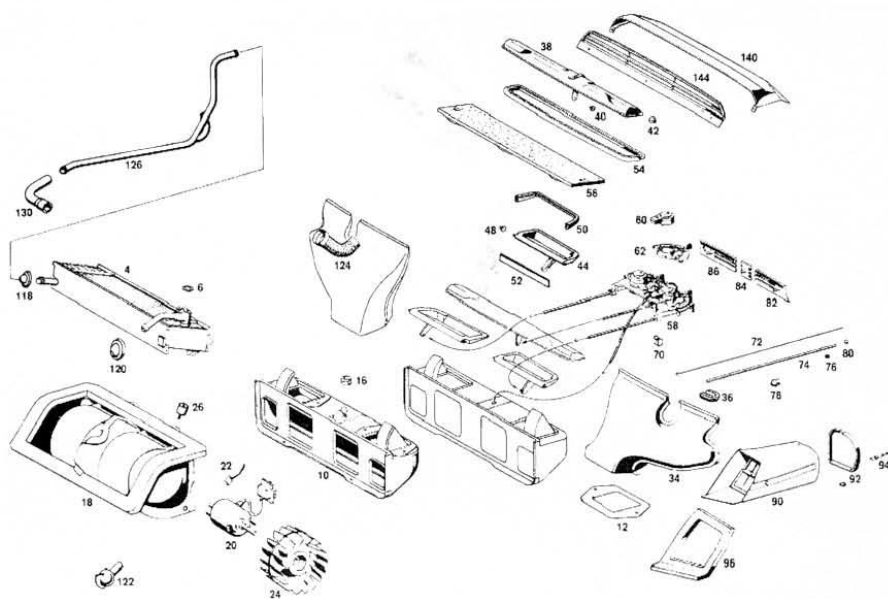


TABLE 86 WINDSCREEN WASHER

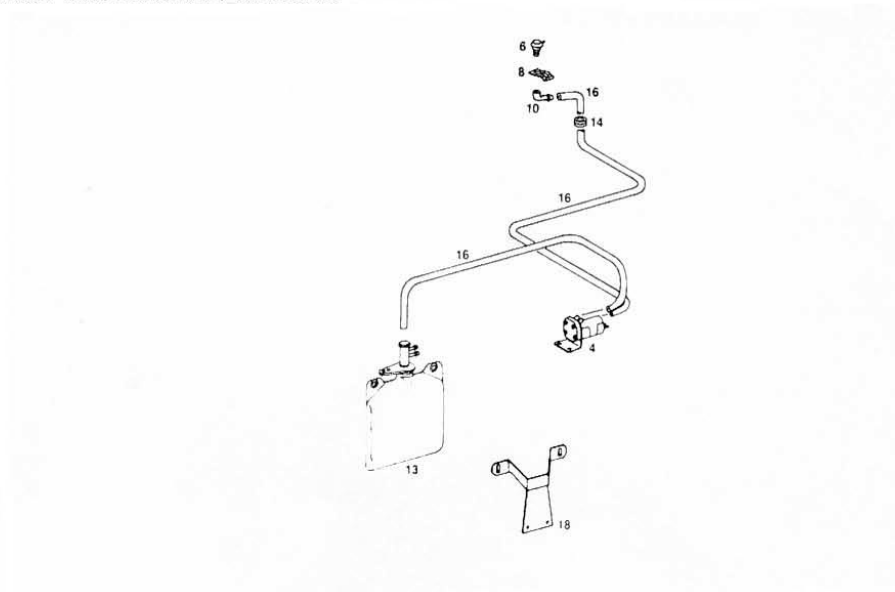


TABLE 88/1 BUMPERS, SILL COVERS & SPLASH PANELS

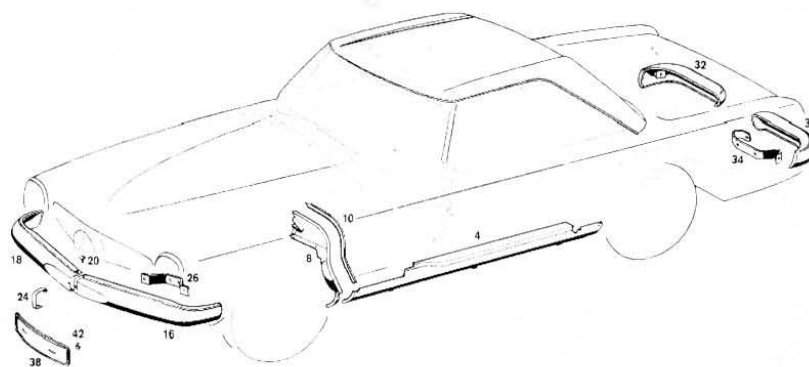


TABLE 88/2 BONNET & FRONT ORNAMENT

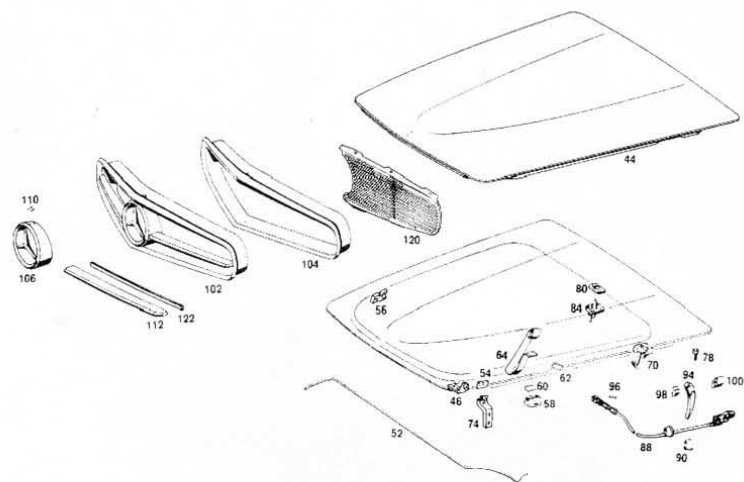


TABLE 91 SEATS

