

Information contained in these materials is subject to change or subject to error. While Mercedes-Benz Australia/Pacific Pty Ltd has endeavoured to ensure that all representations, information, prices, illustrations and descriptions contained in these materials are accurate at the time of publication, information and prices are subject to change without notice and Mercedes-Benz Australia/Pacific Pty Ltd makes no commitment as to the availability of any product. The information in these materials should always be read in conjunction with other materials and information from Mercedes-Benz Australia/Pacific Pty Ltd.

Mercedes-Benz Australia/Pacific Pty Ltd. 44 Lexia Place, Mulgrave, Victoria, 3170.

ABN 23 004 411 410. Printed in Australia. June 2012.

⊕ and Mercedes-Benz are registered trademarks of Daimler AG, Stuttgart, Germany




Mercedes-Benz

Mercedes-Benz Motorenöl Classic Edition



The perfect match

The engine oil for Mercedes-Benz classics



We created your automobile. And now the perfect oil for it

In every detail of your Mercedes, its quality, its authenticity and its legends are preserved. Every part that needs replacing should be replaced by a genuine part. That goes for the engine oil too. It keeps the heart of your vehicle running reliably. And ensures that your original remains an original.

The Mercedes-Benz Classic Edition engine oil embodies all the knowledge of those who built your Mercedes. It meets the specific requirements of the period technology as well as present-day demands. Besides selected high-grade ingredients, the oil contains one thing above all: many decades of experience. It is perfectly matched to your Mercedes-Benz classic – to the past and to the future.



Bertha Benz made the first long trip in automotive history. And the first oil change

The pioneers who took the first long-distance drive in human history found out how important oil is for a vehicle. Not the inventor of the automobile, Carl Benz, but his wife Bertha set off on this trip in August 1888, from Mannheim to Pforzheim. Along for the ride: her two young sons and a great deal of daring and pluck. However, it took the trio only as far as Stettfeld. The oil on the motorcar's drive chain had mixed with the dirt of the road to form an obstructive abrasive paste. It was replaced there and then with fresh machine oil obtained from a cigar factory.

Bertha Benz steered the automobile past many other obstacles in Wiesloch she had to take on fuel – fuel bought from the local apothecary. And the drive chain



broke – it was repaired at a smithy in Ubstadt. The experience of these first 100 kilometres has gone into every Mercedes built since then. And into the new Classic Edition engine oil.



1909



1909



1913



1926

This oil is a genuine Mercedes

Racing cars, state limousines or film stars' cabriolets. Silver Arrow, Stroke Eight, Gullwing, Pagoda, Adenauer, Ponton or Tailfin Mercedes: again and again the visionaries, constructors and designers at Mercedes-Benz have created new, unmistakable models since the first, 0.75 hp, three-wheeled automobile. They turned visions into innovations, dreams into dream cars.

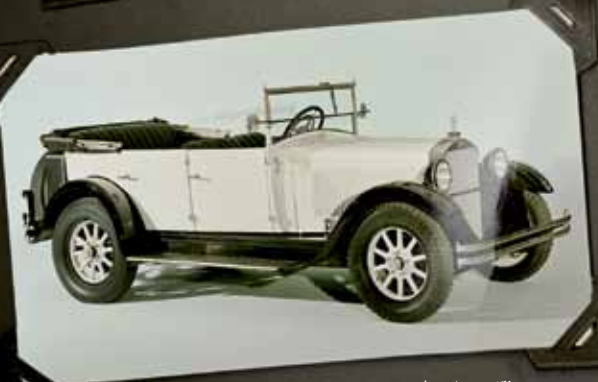
In your Mercedes-Benz classic you own a unique piece of this automotive history. The engine oils of the Mercedes-Benz Classic Edition were developed with the same quality, care and passion as your Mercedes – so that it will retain its performance and special value also in future.



Mercedes-Benz Type S Sport four-seater



Mercedes-Benz 370 S Cabriolet A



Mercedes-Benz 8/38 hp Stuttgart, open touring car



Mercedes-Benz "Grand Mercedes", Type 770, Cabriolet B

From the Mercedes-Benz engine oil Classic Edition:

**SAE 30 single-grade engine oil with
a low additive content**

For use also at temperatures
below +10° C

It is specifically designed for pre-1945
cars as well as for use in classic com-
mercial vehicles.



**Mercedes-Benz 170
Cabriolet C**



**Mercedes-Benz 18/80 hp
Nürburg 460
Pullman-Limousine**



**Mercedes-Benz 500K
Spezial Roadster**



Mercedes-Benz 290 Cabriolet A



From the Mercedes-Benz
engine oil Classic Edition:

**SAE 50 single-grade engine oil
with a low additive content**

For use in summer during long periods
with temperatures above +10° C

It is specifically designed for pre-
1945 cars as well as for use in
classic commercial vehicles.



From the Mercedes-Benz
engine oil Classic Edition:

SAE 20W-50 multi-grade engine oil with a low additive content

For all-season use in normal
operating conditions

The Mercedes-Benz Classic Edition engine oils can be used
in all classic automobiles. Our SAE 20W-50 engine oil is
designed as an all-season oil in particular for the following
model series:

W186, W189, W188 ("Adenauer-Mercedes" and 300 S)
W120, W121, W180, W128, W105 ("Ponton-Mercedes" and 190 SL)
W198 (300 SL "Gullwing" and Roadster)
W110, W111, W112 ("Tailfin Mercedes")
W113 ("Pagoda-SL")

Of course, it can also be used in other vehicles including the
model series 107, 116, 123, 126, 129, 201 and 124, especially for
high-mileage engines.



Mercedes-Benz 300 "Adenauer"



Mercedes-Benz 180 "Ponton"



Mercedes-Benz 300 SL "Gullwing"



Mercedes-Benz 230 SL "Pagoda"

We invented the
automobile.

And service right
along with it

Your Mercedes-Benz classic has witnessed eventful decades. And is going to see still more. Because ever since the automobile was invented, you can also get the right service for it from us. We will see to it that your vehicle remains mobile for a long time to come – that its technical, visual and emotional value is well looked

after. For that, you get the engine oils from the Classic Edition exclusively from Mercedes-Benz partners. And much more than that. At the Mercedes-Benz Classic Centre and authorised Mercedes-Benz Dealerships, specialists await you who know all about historical vehicle engineering. And who have the same great passion for it as you do.

Welcome to Mercedes-Benz Service & Parts. You will find your nearest authorised Mercedes-Benz Dealership at www.mercedes-benz.com.au.

